

Tank inspections

Tanks and Containers

Inspect | Repair | Polish

amotec AG – Your partner for assembly technology, plant construction, and pipeline engineering



Preservation of your equipment through optimal maintenance.

Creating the ideal conditions for efficient production.

Stainless steel tanks and containers: subjected to varied strains.

Fluctuating temperatures, mechanical and chemical impacts lead to corrosion, fissures, seam leaks, or mechanical damages over time.

It's also possible that over time, a tank or container might undergo modifications. Enhanced with additional inlets and outlets, a different agitator, adjustments for heating and cooling mediums, new instrumentation, etc.

amotec AG holds the CE 1250 Certificate, module H, for pressure equipment, pressure vessels, and piping systems. This certificate authorizes us to conduct all repairs on vessels, pressure vessels, and pipeline systems.





Headquarter JAG Jakob AG ISO 9001:2015 certificate



amotec AG welding certificate



amotec AG SQS Certificate

We analyze your facilities and collaboratively plan the necessary maintenance and overhaul work.

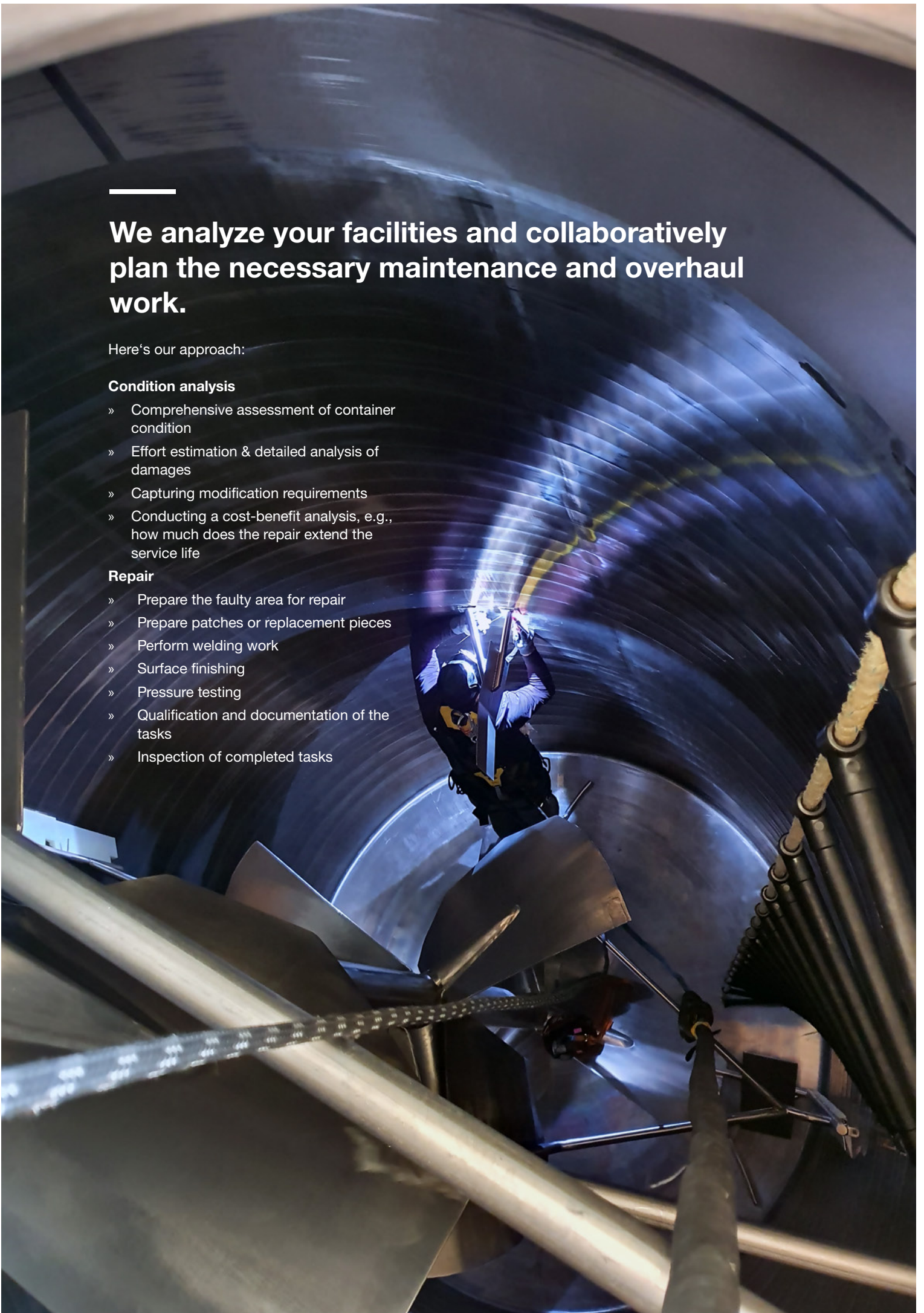
Here's our approach:

Condition analysis

- » Comprehensive assessment of container condition
- » Effort estimation & detailed analysis of damages
- » Capturing modification requirements
- » Conducting a cost-benefit analysis, e.g., how much does the repair extend the service life

Repair

- » Prepare the faulty area for repair
- » Prepare patches or replacement pieces
- » Perform welding work
- » Surface finishing
- » Pressure testing
- » Qualification and documentation of the tasks
- » Inspection of completed tasks





Safety first

Personal Protective Equipment (PPE) and Personal Fall Protection Systems (PFPS)

CSE Confined Space Entry for work in containers and confined spaces.

Our employees possess the necessary training for users of fall protection systems for industrial, construction, and practice-oriented specialization.

We consistently adhere to SUVA guidelines:

- » No solo work with PFPS as per VUV Art. 8
- » BauAV Art. 19 & VUV Art. 5
- » Safety harnesses, EN 361 / EN 358

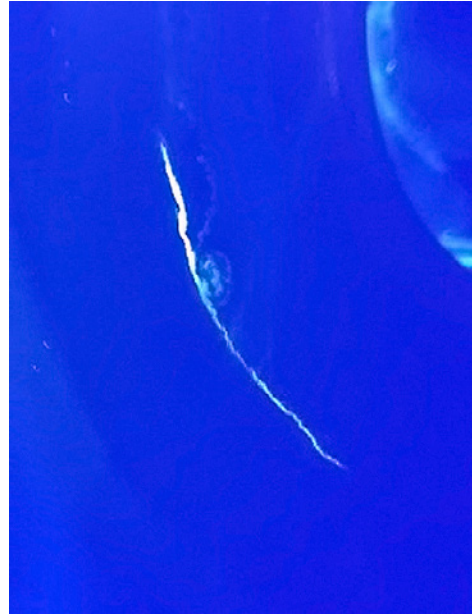
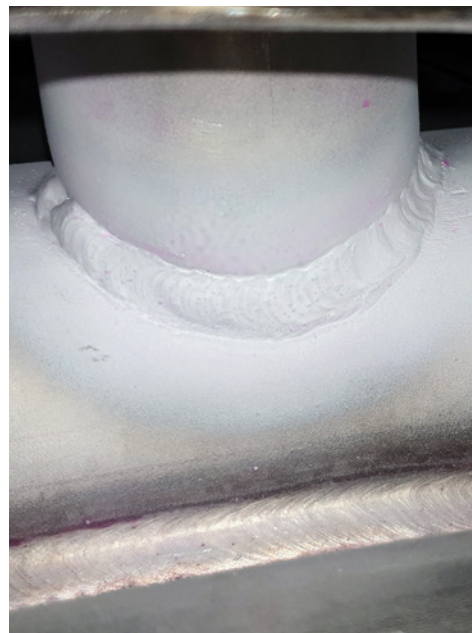
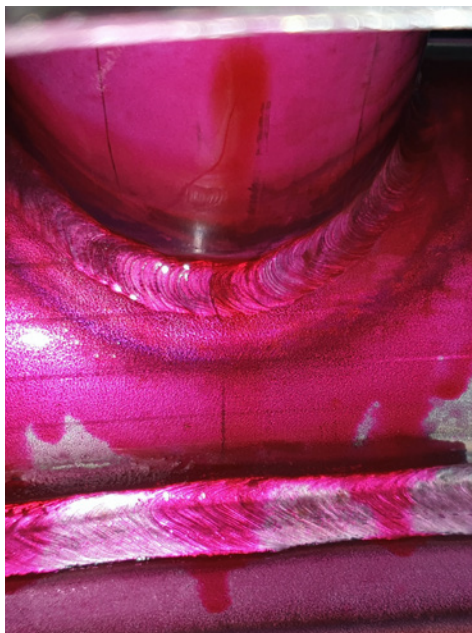
Repair of cracks in containers

Tank and container repairs

For the detection of cracks in containers, silos, and pipeline systems, we employ the PT dye penetrant inspection method.

The color contrast allows for the identification of damaged areas and determination of crack paths.

We possess the necessary certification according to SN EN ISO 9712 for conducting Level 1 & 2 PT examinations / dye penetrant tests.



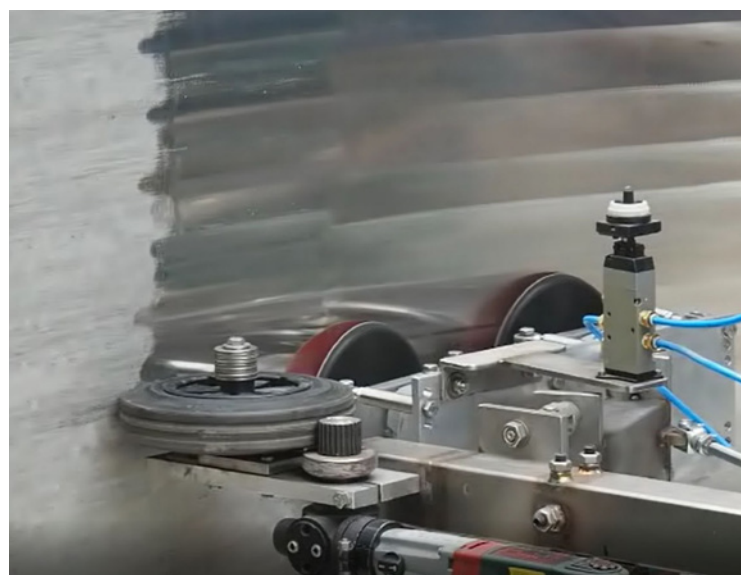
Container polishing and grinding machine

Tank and container repairs

For grinding and polishing work on the inner lining of silos and containers, we have two semi-automatic, radial polishing and grinding systems.

The container grinding machine is used for heavily scratched surfaces. Surface qualities of Ra 0.8 are achieved.

Depending on the requirements, the container polishing machine is then employed. This system achieves surface qualities of Ra 0.4.



Non-destructive crack inspection

Using robots and same-day repairs

The testing equipment is neatly packed in just two cases, making travel effortless for our technicians. With no chemicals involved, disposal and cleaning efforts are minimized. Non-destructive crack inspection through robotics presents numerous advantages, notably time savings and enhanced safety for our own employees



The advantages

As an example of inspection, examining a spray tower with a diameter of 8 meters and a height of 14 meters using a robot takes only about 8 hours. According to customer information, the conventional method using scaffolding and chemicals would require approximately 24 hours of cumulative work time. At the end of the inspection, the client receives a preliminary report containing the key findings. This enables a decision to be made whether immediate repairs are necessary or can be deferred. Within 72 hours, the detailed inspection report follows, encompassing all essential information as well as the overall results.

We possess the necessary certification according to SN EN ISO 9712 for conducting Visual Testing (VT) Level 1 & 2 examinations.

Repairs by our welders / Industrial climbers

Any necessary repair work can be carried out immediately following our inspection. Inspection and repair tasks can be conducted on the same day. This means that the downtime of your production facilities is minimized, resulting in significant cost savings.

Our team of TIG welders is authorized to work in confined spaces and containers. There are always a minimum of two personnel on-site, as required for work in enclosed spaces.

Tank inspections



Our Services

Your benefits

- » Assurance of equipment availability
- » Minimization of unplanned downtimes
- » On-Site or workshop maintenance
- » Prevention of subsequent damages and repairs
- » Documentation of accomplished tasks
- » Impartial manufacturer assessment
- » Early detection of problem areas
- » Preservation of equipment value
- » Execution according to agreed scope of services
- » Reliable schedule management



amotec AG

Erlenauweg 13
CH-3110 Münsingen
T +41 (0)31 720 34 34
info@amotec.ch
www.amotec.ch